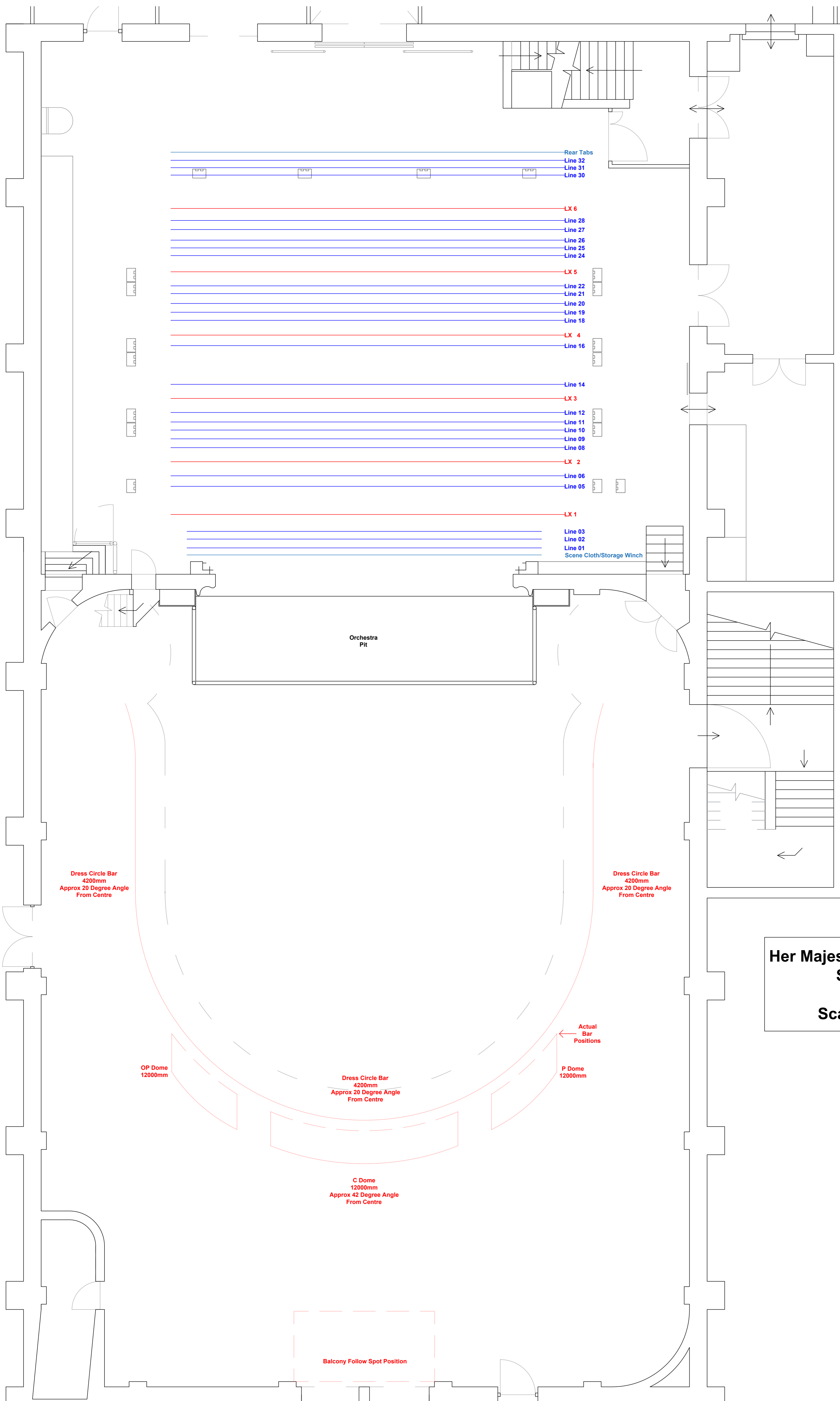


HER MAJESTY'S THEATRE - STANDARD FLY PLOT 2021

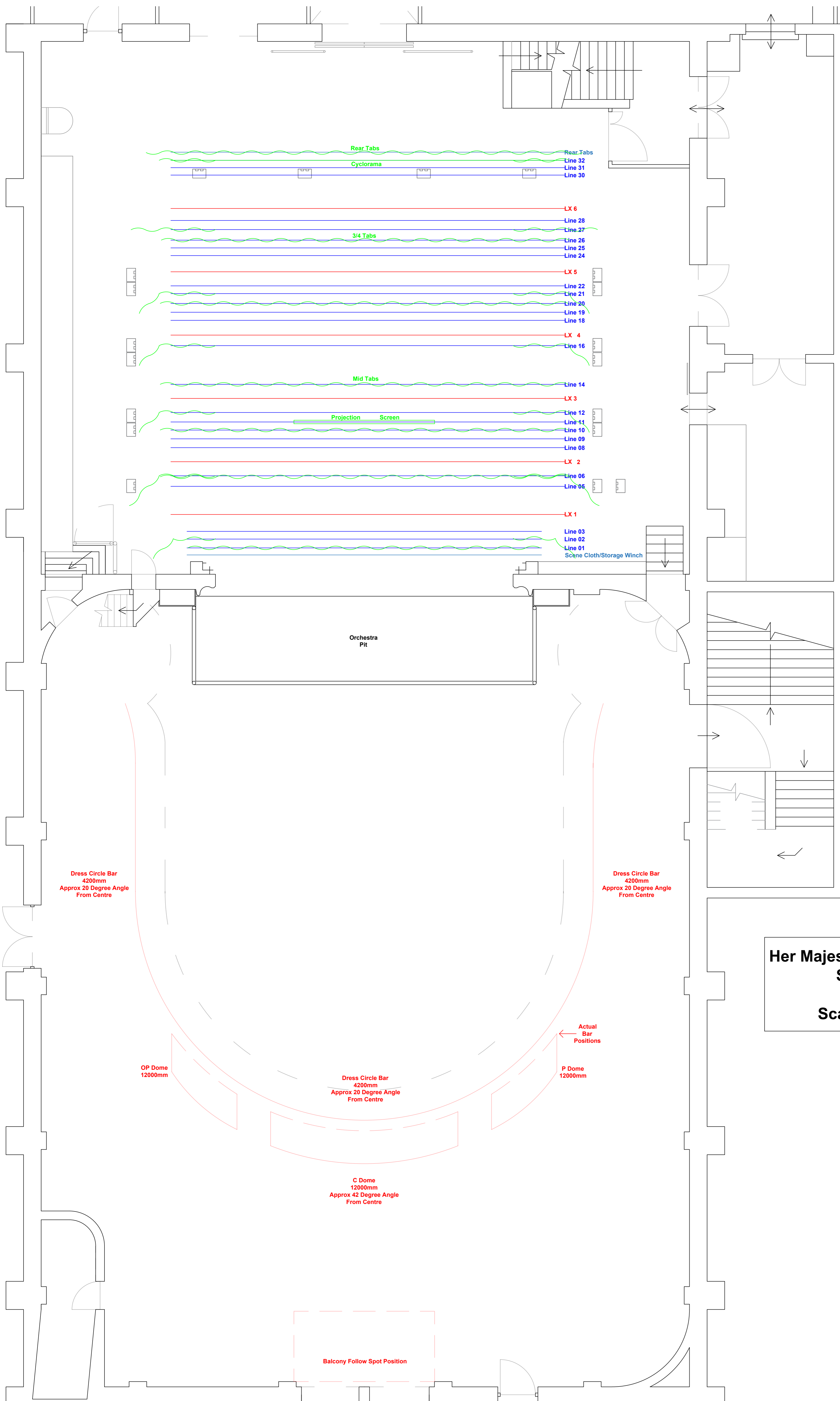
Fly Line	From Setting Line (mm)	Standard Rig	Distance From Down Stage Line (mm)	Distance from Down Stage Elec. Bar (mm)	SWL Of Fly Line (kgs)
Dead Hung	11640	Black Tabs - Permanent, Tracked/Drawable	230		
32	11410	Cyclorama & Legs 7	210	1250	120
31	11200		210		120
30	10990		300		120
	10690	Structural Beam - U/S Edge	410		
	10280	Structural Beam - D/S Edge	240		
29 - LX 6	10040	Electric Winch - CYC BAR	340	1800	500
28	9700		260		120
27	9440	Legs 6	300		120
26	9140	Black Tabs/Smother	220		120
25	8920		220		120
24	8700		460		120
23 - LX 5	8240	Electric Winch	400	1800	500
22	7840		220		120
21	7620	Legs 5	280		120
20	7340	Border 4	250		120
19	7090		230		120
18	6860		420		120
17- LX 4	6440	Electric Winch	300	1800	500
16	6140	Legs 4	190		120
	5950	Structural Beam - U/S Edge	410		
	5540	Structural Beam - D/S Edge	250		
15	5290	NOT INSTALL DUE TO STRUCTURAL INFRINGEMENTS - TBC	250		120
14	5040	French Tabs - Mid Stage	400		120
13 - LX 3	4640	Electric Winch	400	1800	500
12	4240	Legs 3	270		120
11	3970	Projector Screen	230		120
10	3740	Border 3	250		120
9	3490		250		120
8	3240		400		120
7 - LX 2	2840	Electric Winch	400	1500	500
6	2440	Border 2/Legs 2	300		120
5	2140		155		120
	1985	Structural Beam - U/S Edge	100		
	1885	Structural Beam - D/S Edge	545		
4- LX 1	1340	Electric Winch	100	0	500
	1240	Structural Beam - U/S Edge	200		
	1040	Structural Beam - D/S Edge	180		
3	860		220		120
2	640	Legs 1	250		120
1	390	HOUSE CURTAIN	200		120
SCENE CLOTH	190	SCENE CLOTH/STORAGE - Electric Winch	190		150
Setting Line	0	Set at Rear of Fire Curtain Mech.			
Back of Pros.	-360				
Pros. Line	-635	Depth Of Pros. Arch & Fire Curtain Mech.			
Apron	-1000	Edge Of Raked Stage			
Pit Extension	-3400	Level Platform Over Orchestra Pit (2.4m x 9.3m)			

HER MAJESTY'S THEATRE - STAGE & GRID DIMENSIONS/LIMITS

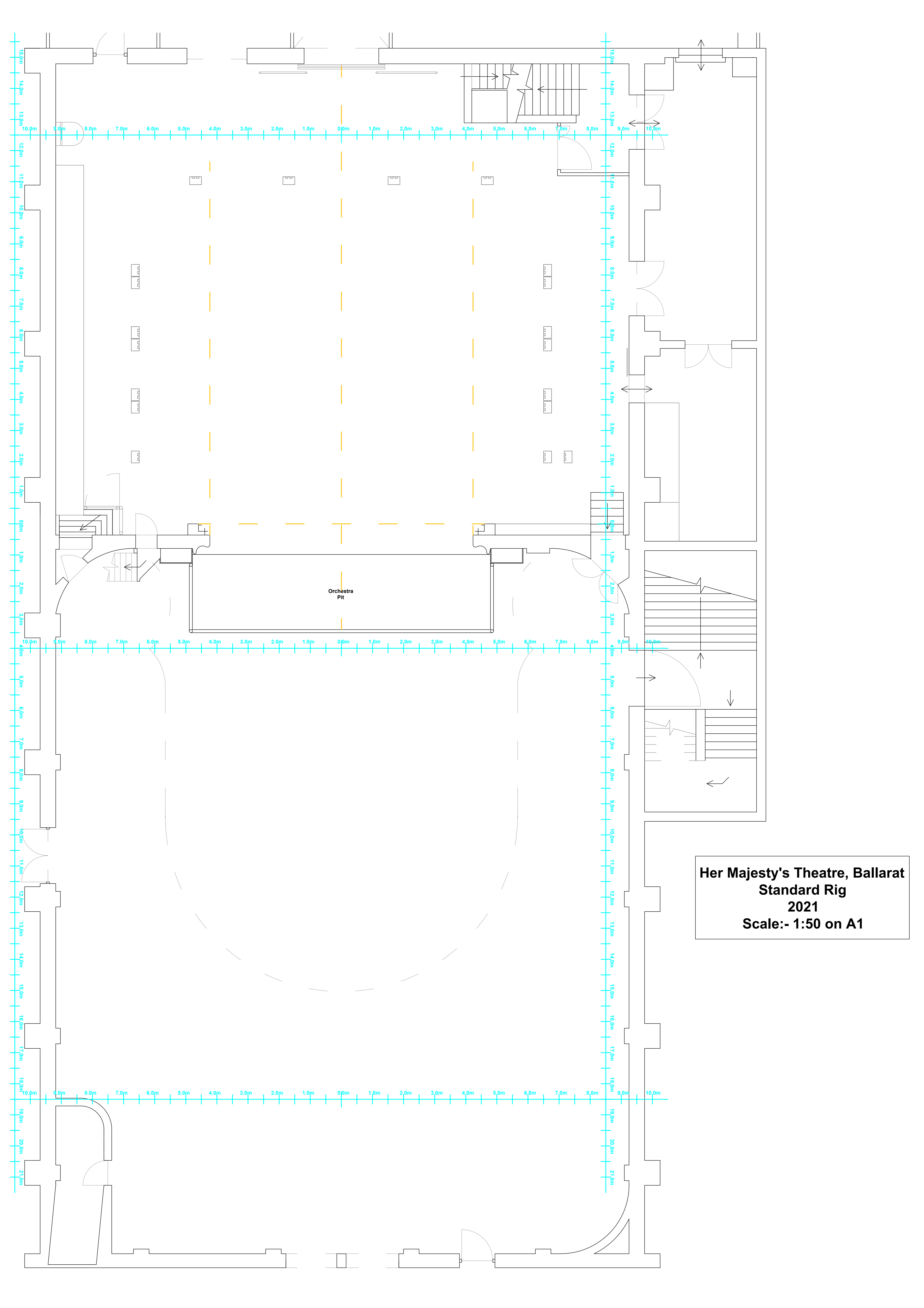
Fly System:- Double Purchase Counterweight Fly System	Proscenium:- 8.46m Wide x 6.15m High
System Weighting:- 1kg of Bar Weight = 2kgs of Cradle Weight	Apron to Setting Line:- 1m
Fly Cradle Load Limit:- 240kgs (20 x 12kg Weights)	Setting Line to Mid Stage Tabs (Line 14):- Approx. 5m
Standard Weights:- 12kgs	Setting Line to Cyc (Line 32):- 11.4m
Option Weights:- 6kgs	Setting Line to Loading Dock Doors:- 14.5m
Batten Max Load:- 120kgs	Total Stage Dimensions:- 18.43m Wide x 14.5m Deep
Batten Point Load Limit:- 120kgs (Point Loading may require counter balancing)	Performance Space:- 8.46m Wide x 11.4m Deep
Truss/Winch Max Load:- 500kgs	Rake of Stage:- Approx. 1:35 (Approx. 2.5- 3 Degrees)
Truss Point Load Limit:- 50kgs per section (Point Loading may require counter balancing)	Orchestra Pit Extension:- 9.3m Wide x 2.4m Deep
Batten Diameter:- 48mm OD Circular Hollow Section Steel Tube Battens	Stage Point Load Limit:- 7Kpa (700kgs per m ²)
Batten Length:- 10 - 11.2m dependant on position and obstructions in the grid	Pit Extension Point Load:- 4.5Kpa (450kgs per m ²)
LX Truss Type:- 300mm Aluminium Tri Truss, 48mm OD	Width Between Galleries (P - OP):- 13.1m
LX Truss Length:- 12m	Standard Border Height:- 5.5m
Grid to Stage:- Approx. 13.1m D/S, 12.2m U/S	Standard LX Truss Height:- Approx 6.5m
Stage to Fly Floor:- Approx. 7.38m D/S, 6.95m U/S	Stage Lift Dimensions:- 1.65m W x 2.6m D x 3.8m H
Batten Travel:- Approx. 12.3m D/S, 11.3m U/S (Bump Stop Prevents Travel Into The Grid)	Stage Lift SWL:- 2000kgs



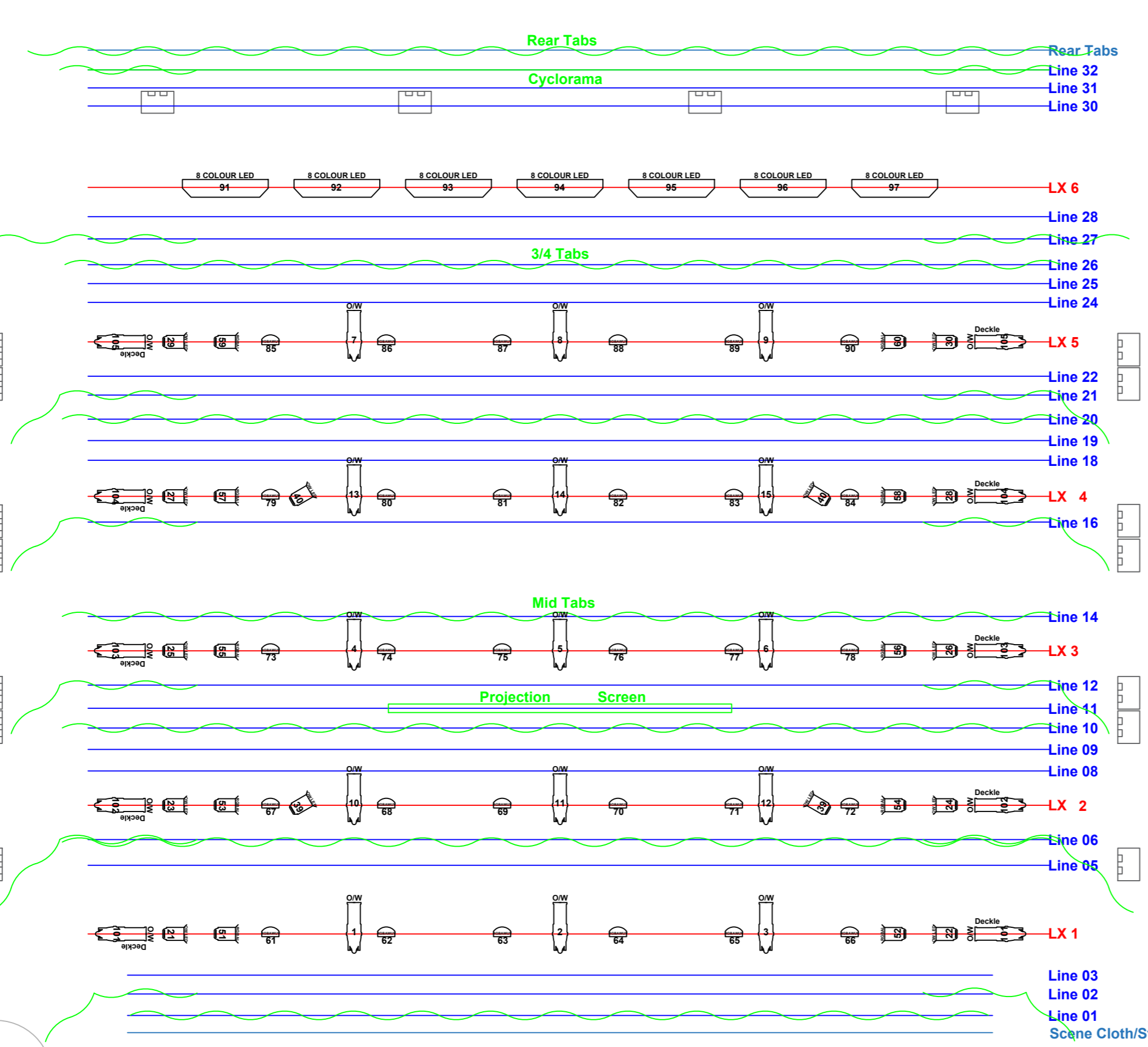
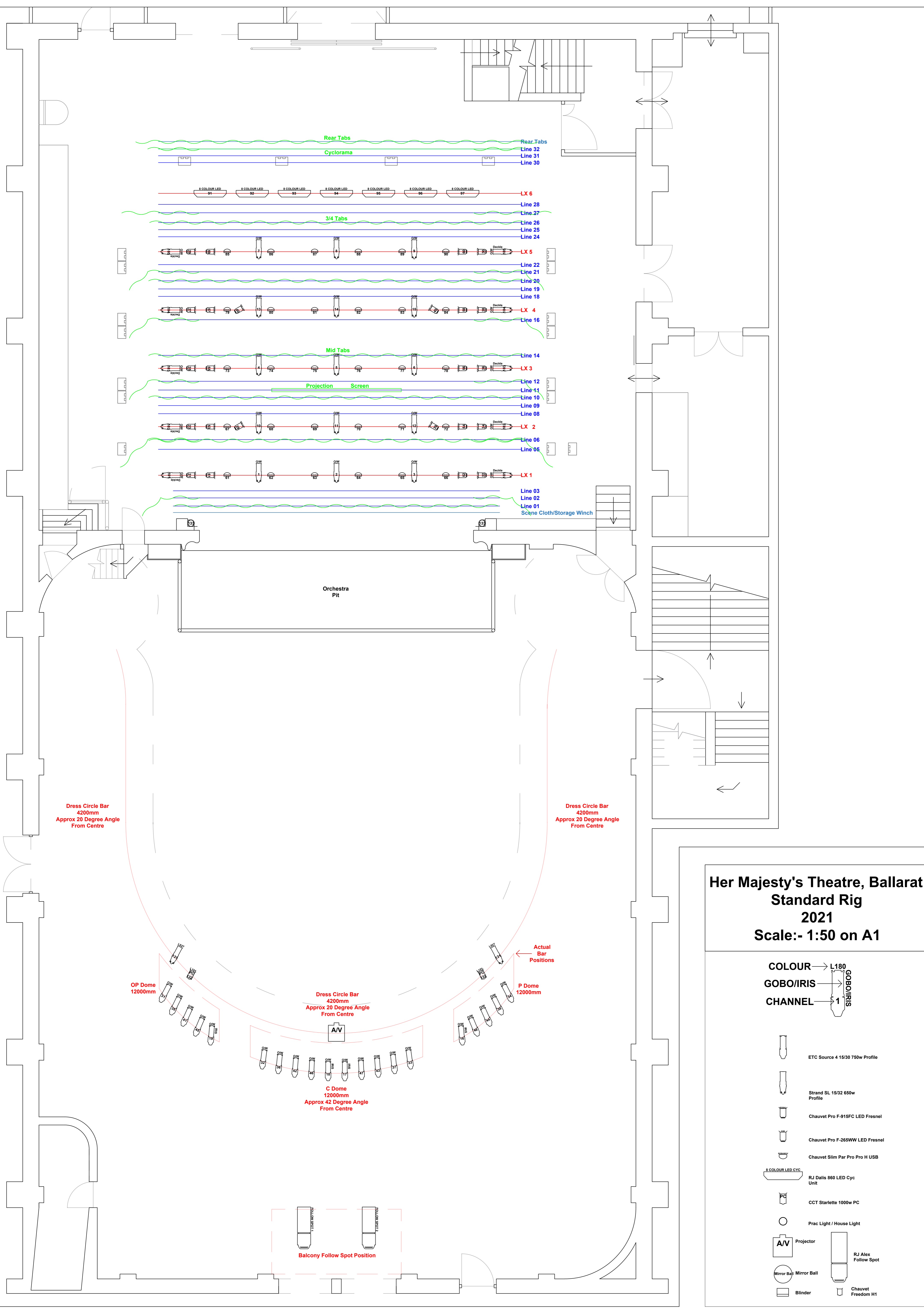
Her Majesty's Theatre, Ballarat
Standard Rig
2021
Scale:- 1:50 on A1



Her Majesty's Theatre, Ballarat
Standard Rig
2021
Scale:- 1:50 on A1



Her Majesty's Theatre, Ballarat
Standard Rig
2021
Scale:- 1:50 on A1



Dress Circle Bar
4200mm
Approx 20 Degree Angle
From Centre

Dress Circle Bar
4200mm
Approx 20 Degree Angle
From Centre

OP Dome
12000mm

Dress Circle Bar
4200mm
Approx 20 Degree Angle
From Centre

P Dome
12000mm

C Dome
12000mm
Approx 42 Degree Angle
From Centre

Balcony Follow Spot Position